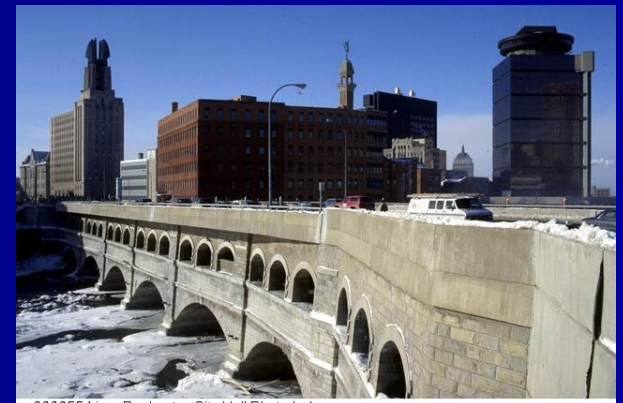


Waterfront Brownfield Redevelopment in Rochester, NY

USEPA Brownfield Conference
Detroit, Michigan
May 6, 2008



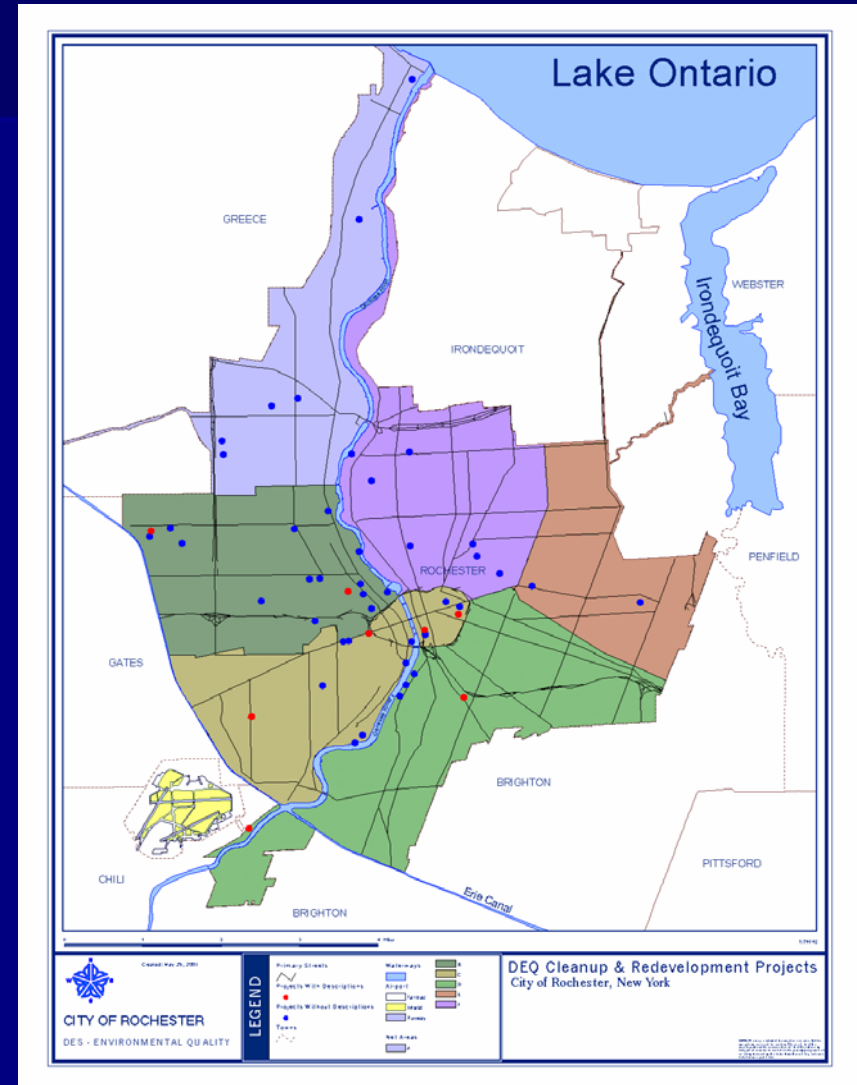
c0000554.jpg Rochester City Hall Photo Lab

Mark Gregor,
Manager, Division of Environmental Quality

City of Rochester, New York

Rochester, NY & its Waterfronts

- Incorporated as a City: 1834
- Early Mill industry: "The Flour City"
- Downtown Erie Canal aqueduct
- Population: 219,773 (2000 U.S. Census)
- Location: On Lake Ontario and bisected by the Genesee River



Waterfront vision

- Port & harbor redevelopment
- Lake Ontario Beaches
- Erie Harbor (river south of downtown)
- Re-watering the Erie Canal Aqueduct
- Cleanup & redevelopment of the former Vacuum Oil Refinery site
- Riverfront trails & public access

Port of Rochester



Rochester's Waterfront Brownfield Legacies

- Iron Works at Port
- Standard Oil Company of NY refinery
- Three coal gasification plant sites
- Superfund sites
- Marinas
- Historic land filling
- Railroad and related impacts...

2001 Train Derailment Looking East toward Genesee River





December 2001 Port CSXT train derailment and solvent fire



Iron work, blast furnace, & rail yard Port of Rochester, NY



from the Albert R. Stone Negative Collection, Rochester Museum & Science Center, Rochester, N.Y.



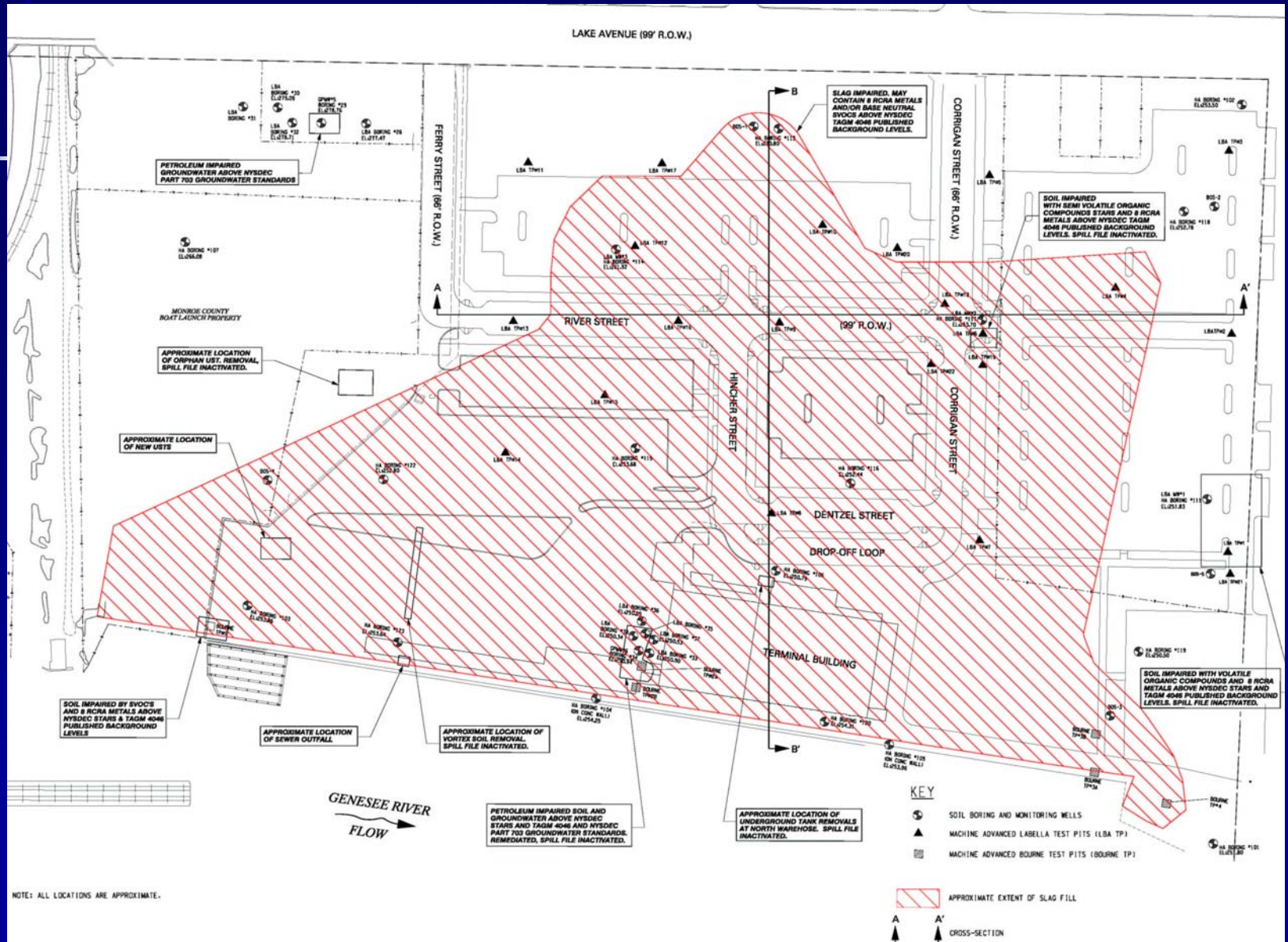
**Old Beach
Shore Line
Circa 1803**

**Former Blast
Furnace**

**Possible
Marina Sites**

**Former
Railroad Yard**

Extent of regulated slag waste from Iron Works in fill present on Port of Rochester Redevelopment Site



Rochester's Waterfront Revitalization: Environmental Hurdles

- Beach & wildlife water quality impacts
- Site impacts to surface water quality
- Sediment characterization & dredging
 - Eg. Eastman Kodak legacy pollutants
- Alluvial, fill, & other use conditions (geotechnical)
- Tough land ownership & control issues (Rail, utilities, US govt. etc.)
- River & harbor channel management

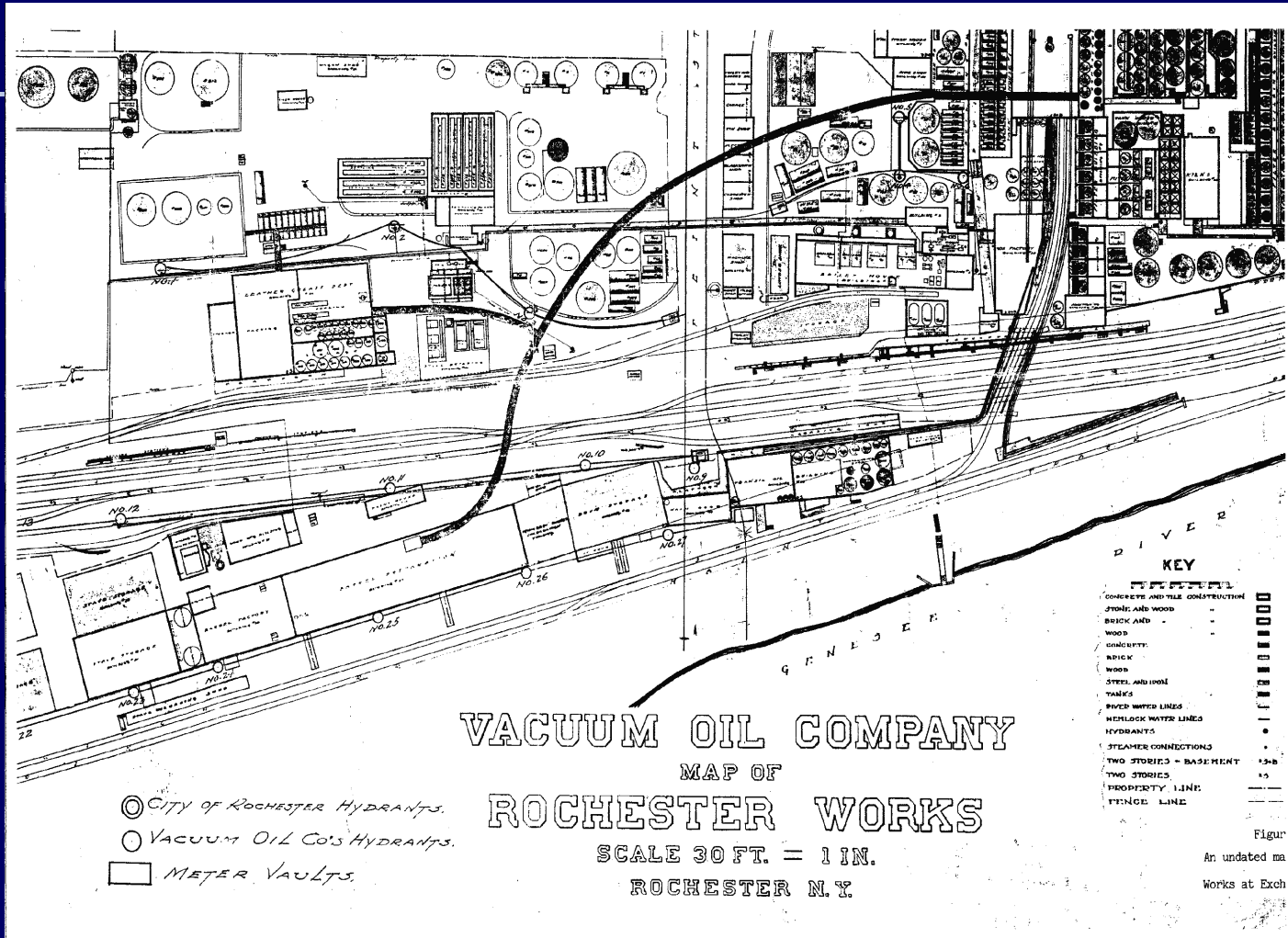
Hurdles continued...

- Additional agency jurisdictions (especially the USACOE)
- Historic waterfront industries eg refinery, coal gasification
- Bank stabilization, scour & river sedimentation
- Wetlands impacts & remediation
- Maintenance of public access



CSXT IRM Riverbank Excavation: October 2003

Former Vacuum Oil Refinery Site on Genesee River (Predecessor to Exxon Mobil)





Exchange Street

**Former Vacuum Oil
(SOCONY)
Oil Refinery – remaining
structures**

Genesee River

Rochester Gas & Electric former Front Street Coal Gasification facility site

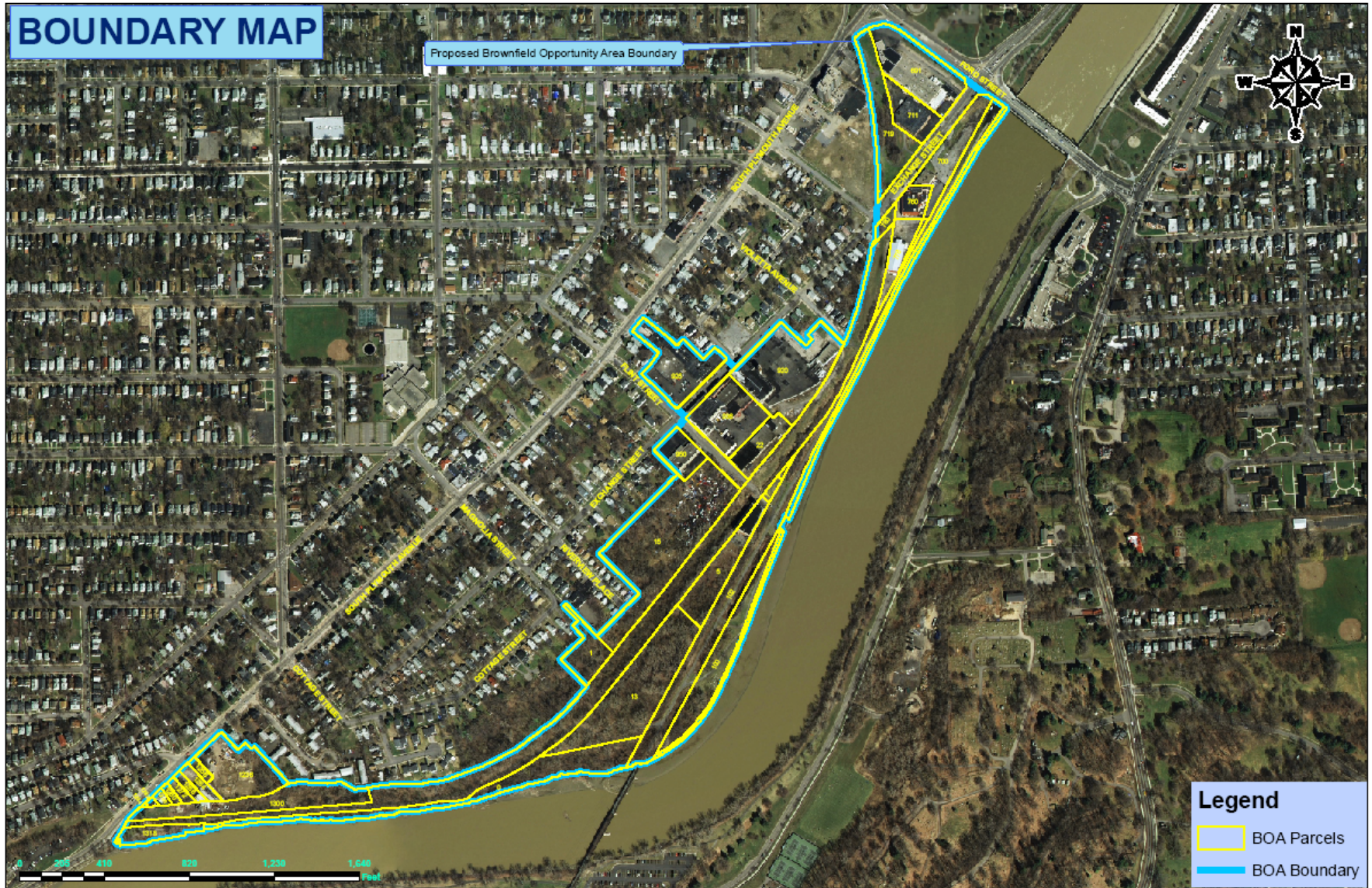


Outside Resources

- **NYS Brownfield Grant Programs**
 - Planning (BOA program)
 - Site Investigation & remediation
- **NYS Depart. of State LWRP (CZMA)**
- **USEPA**
 - Assessment and Cleanup grants
- **US ACOE**
 - Section 22 Planning grants
 - WRDA authorization/appropriations
- **Responsible Parties and owners**

BOUNDARY MAP

Proposed Brownfield Opportunity Area Boundary



**Former SOCONY Vacuum Oil refinery site
Brownfield Planning and investigation area
(NYSDOS grant, USEPA grant & Exxon Mobil)**

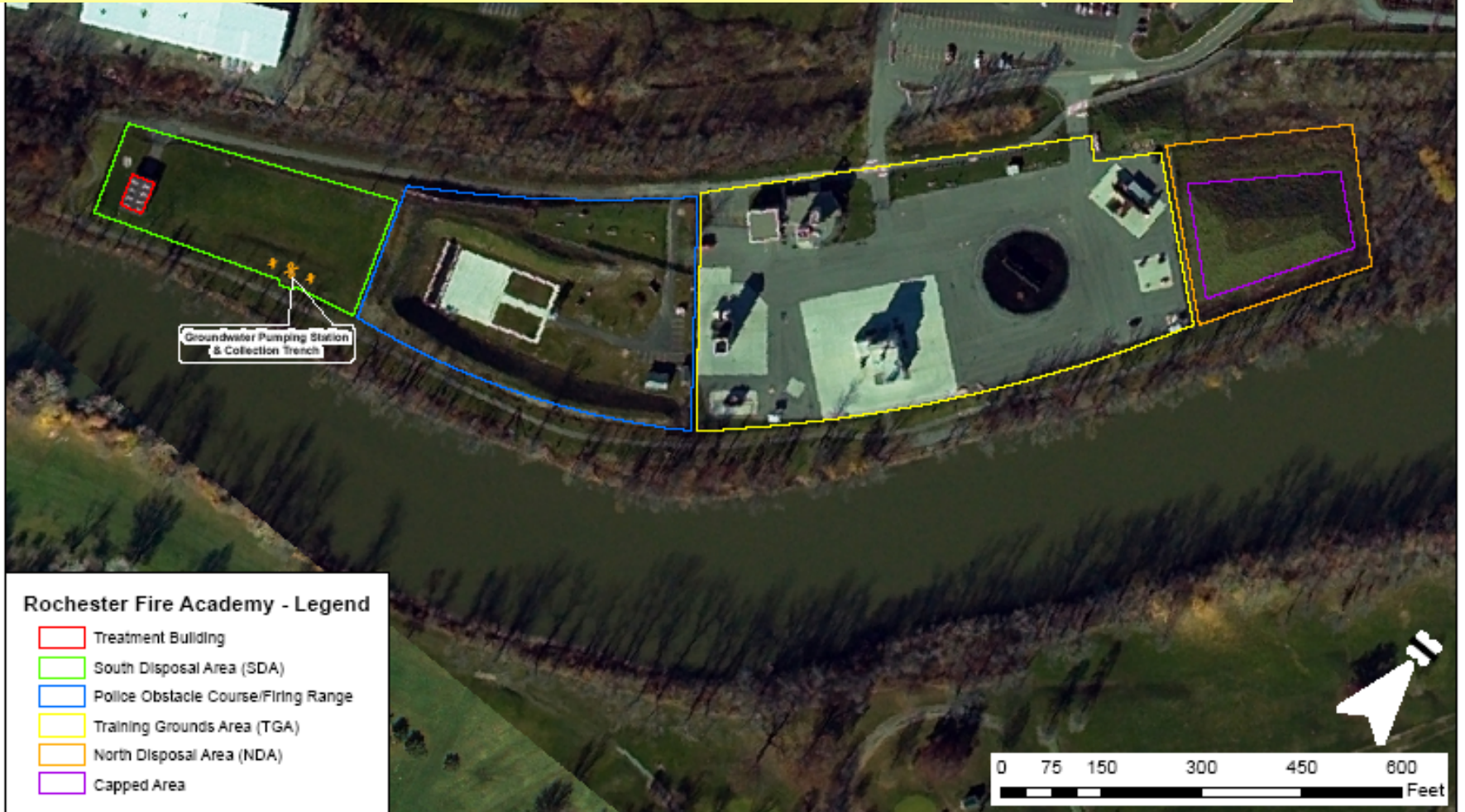
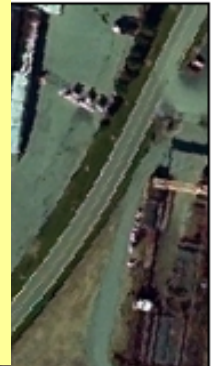
Rochester Fire Academy Site

\$8 million superfund site cleanup (City & NYS \$)

\$26 million Redevelopment into a Regional

Aircraft Fire Rescue and Public Safety Training Facility

(Funded by City, Monroe County, SUNY, FAA, DOT)



**City of Rochester
Downtown Waterfront
Brownfield Cleanup
Projects**



Front Street Site

Downtown

Corn Hill Landing

**Mt. Hope
(North Site)**

Erie Harbor Redevelopment

Mt. Hope (South Site)

Progress and investment

Brownfield program and projects

- \$2.4 million EPA brownfield grants
- \$16 million NYS inv. & cleanup grants
- Several downtown riverfront sites
- Exxon Mobil agreement with NYSDEC
- Port of Rochester
 - \$59 million in public improvements
 - T-21 \$19 million
 - Army Corp, Customs, Coast Guard
 - NYSDOT and DOS Waterfront programs
 - \$10 million WRDA authorization



End of Presentation



Thank You!

**Mark Gregor,
Manager, Division of Environmental Quality
City of Rochester, New York
mgregor@cityofrochester.gov
585-428-5978**

www.cityofrochester.gov/des/deq.cfm